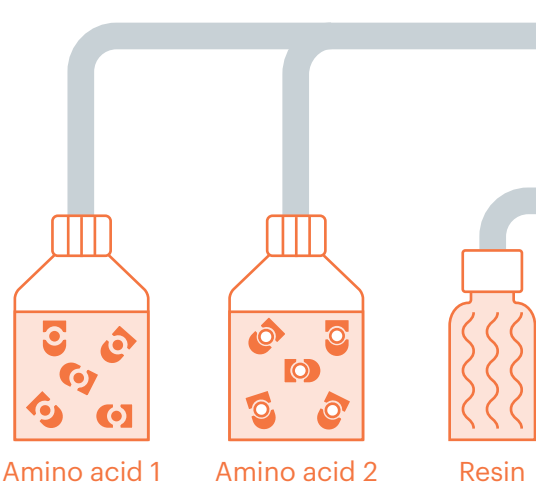
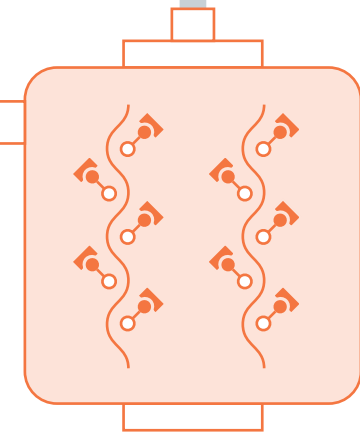


Peptide manufacturing workflow

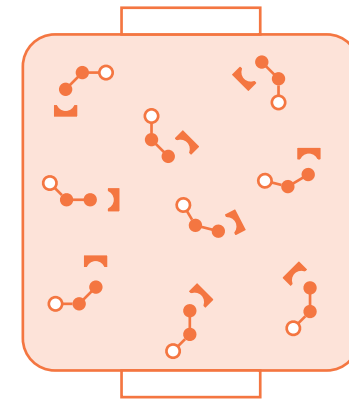
Synthetic peptide drug substances and drug products



Starting materials qualification and testing

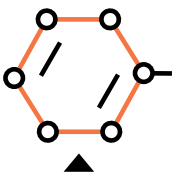


Solid phase peptide synthesis (SPPS)



Cleavage/deprotection and isolation of crude peptide

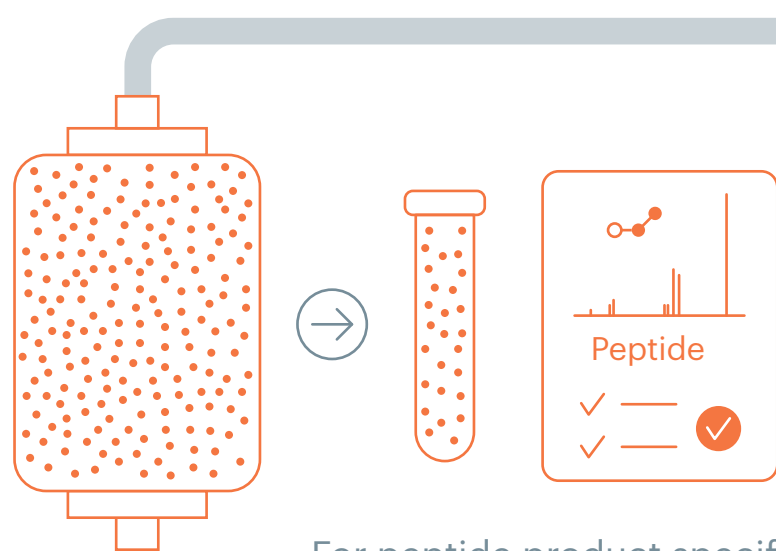
CONTACT US
Peptide Reference Standards & Materials



uspbiologics@usp.org

Telephone:
+1 (301) 881-0666
+1 (800) 4875-5555

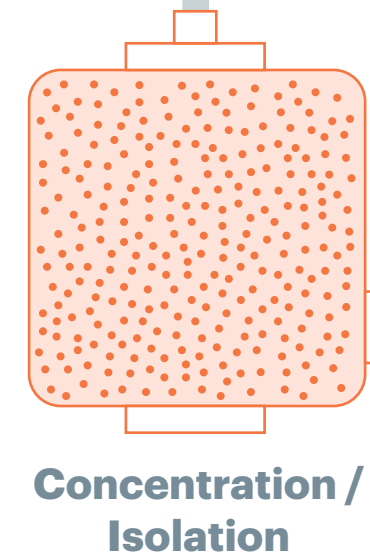
Icon Information:
 Link will open in browser



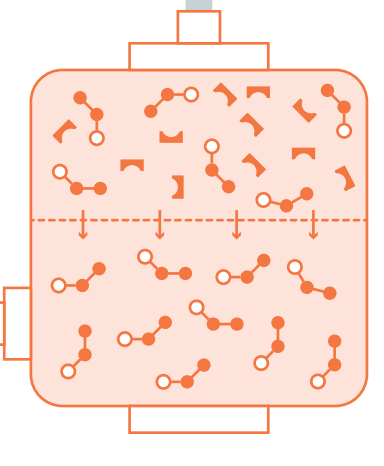
MANUFACTURING OF DRUG SUBSTANCE

Drug substance testing and release

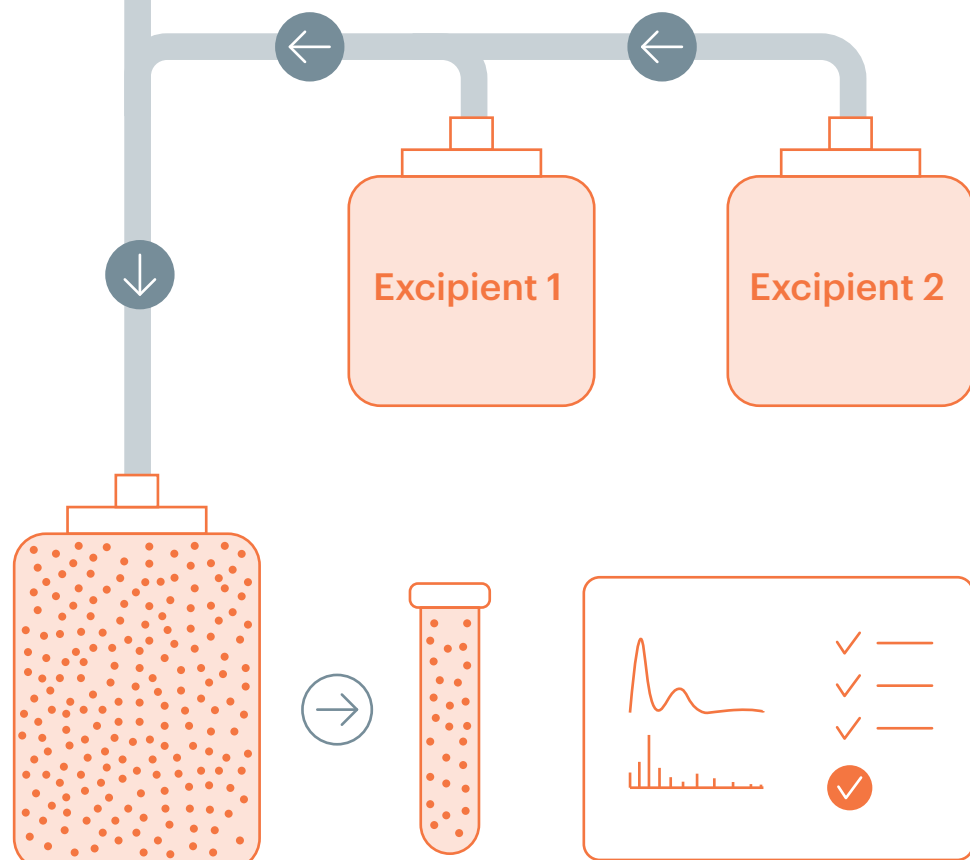
For peptide product specific monographs and USP Reference Standards and Analytical Reference Materials for associated peptide active pharmaceutical ingredients (APIs) and peptide impurities, please visit <https://www.usp.org/biologics/peptides>



Concentration / Isolation



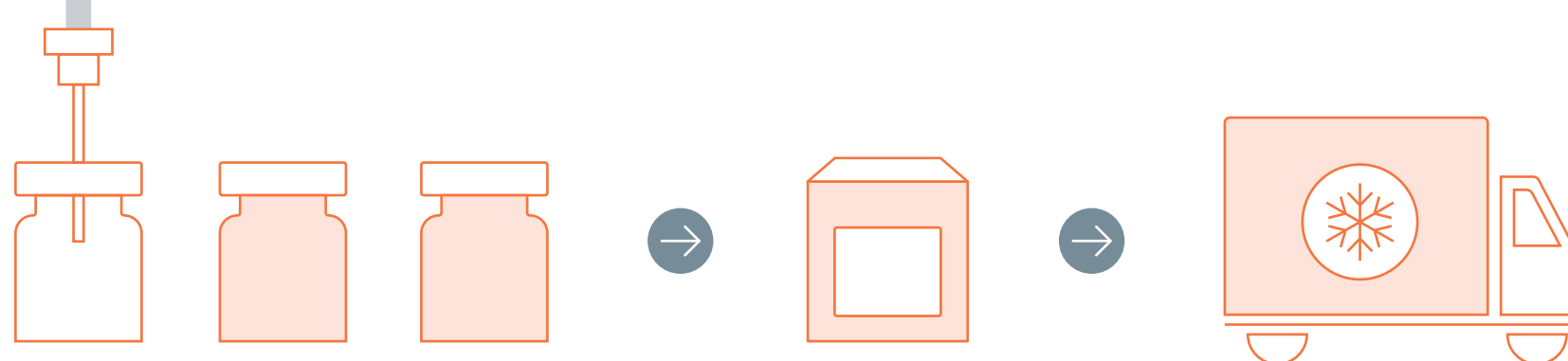
Purification



MANUFACTURING OF DRUG PRODUCT

Drug product testing and release

Excipients: For Reference Standards for Excipients Curated by Peptide API, please visit <https://www.usp.org/biologics/peptides>



Packaging and distribution

Extractables and Leachables: