

PHARMACOPOEIAL DISCUSSION GROUP

**SIGN-OFF DOCUMENT
CODE: G-20
NAME: CHROMATOGRAPHY**

It is understood that sign-off covers the technical content of the draft and each party will adapt it as necessary to conform to the usual presentation of the pharmacopoeia in question; such adaptation includes stipulation of the particular pharmacopoeia's reference materials and general chapters.

Harmonised provisions:

Provision	EP	JP	USP
Introduction	+	+	+
Definitions ⁽¹⁾	+	+	+
System suitability ⁽¹⁾	+	+	+
Adjustment of chromatographic conditions ^{(1) (2)}	+	+	+
Quantitation	+	+	+
Other considerations	+	+	+

(1) Thin layer chromatography will not be stipulated by JP.

(2) JP will not stipulate the sentence 'For some parameters, the adjustments are explicitly defined in the monograph to ensure the system suitability'

Non-harmonised provisions: N/A

Local requirements

EP	JP	USP
<p><i>Introduction:</i> reference to corresponding Ph. Eur. chapters on TLC, LC, GC ...</p> <p>In planar chromatography, retardation factors R_{Fst} and R_{Fi} used instead of t_{Rst} and t_{Ri}.</p> <p><i>Relative retention time, RRT:</i> not stipulated as synonym of relative retention</p> <p><i>System suitability:</i> guidance of the way to determine the S/N ratio (solution to be used)</p>	<p><i>Introduction:</i> The sentence handling of the existing JP local chapter Liquid Chromatography <2.01> is added.</p> <p><i>Resolution:</i> definition of baseline separation</p> <p><i>System suitability:</i> the sentence in the sign-off text 'The following requirements are to be fulfilled, in addition to any other system suitability criteria stated in the monograph' will be replaced by 'When the following criteria are specified in the system</p>	<p><i>Introduction:</i> last paragraph not stated.</p> <p><i>Sections on General Procedures and Chromatographic columns are included</i></p> <p><i>System suitability:</i> number of injections depending on the RSD requirement.</p> <p><i>Adjustment of chromatographic conditions</i> – LC mobile phase: examples of binary and ternary mixtures added; LC column dimensions (gradient</p>

P.D. Ktm Y.g.

	<p><i>suitability tests, each requirement is to be fulfilled unless otherwise prescribed.'</i></p> <p><i>Adjustment of chromatographic conditions:</i> paragraph added excluding adjustment for certain tests for biotechnological/ biological products such as peptide mapping, glycosylation analysis of glycoprotein, and molecular heterogeneity (LC separation pattern specified as a profile); sentence added excluding adjustment for crude drugs and related drugs.</p> <p><i>Adjustment of the flow rate after adjustment of the column dimensions (isocratic and gradient LC):</i> read 'the flow rate may require adjustment' and 'The flow rate can be adjusted for both the change....'</p>	<p>elution): different wording for TPP to SPP requirements</p> <p><i>Other considerations –</i> detector response: different wording included</p>
--	--	---

European Pharmacopoeia

Signature



Name

Petra Doerr

Date

28 Sep 2021

Japanese Pharmacopoeia

Signature

Yukihiko Goda
for Y. Yoshida

Name

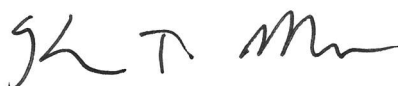
Yukihiko Goda

Date

9 Sep. /2021

United States Pharmacopoeia

Signature



Name

Kevin Moore

Date

23-SEP-2021

1

2

3

4

5

G-20 CHROMATOGRAPHY

INTRODUCTION

6

Chromatographic separation techniques are multi-stage separation procedures in which the components of a sample are distributed between 2 phases, one of which is stationary, while the other is mobile. The stationary phase may be a solid or a liquid supported on a solid or a gel. The stationary phase may be packed in a column, spread as a layer, or distributed as a film, etc. The mobile phase may be gaseous or liquid. The separation may be based on adsorption, mass distribution (partition), ion exchange, etc., or may be based on differences in the physico-chemical properties of the molecules such as size, mass, volume, etc.

13

This chapter contains definitions and calculations of common parameters and generally applicable requirements for system suitability. Principles of separation, apparatus and methods are given in the corresponding general chapters.

16

DEFINITIONS

18

The system suitability and acceptance criteria in monographs have been set using parameters as defined below. With some equipment, certain parameters, such as the signal-to-noise ratio and resolution, can be calculated using software provided by the manufacturer. It is the responsibility of the user to ensure that the calculation methods used in the software are equivalent to the requirements of the <Name> Pharmacopoeia and to make any necessary corrections if this is not the case.

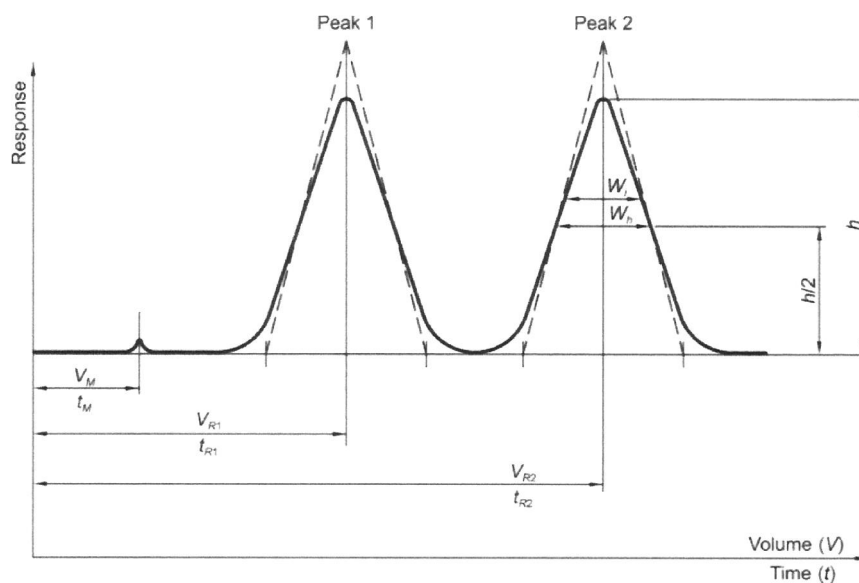
24

Chromatogram

26

A graphical or other representation of detector response, effluent concentration or other quantity used as a measure of effluent concentration, versus time or volume. Idealised chromatograms are represented as a sequence of Gaussian peaks on a baseline (Figure 1).

29



30

31

Figure 1

32

V_M = hold-up volume;

33

t_M = hold-up time;

34

V_{R1} = retention volume of peak 1;

35

t_{R1} = retention time of peak 1;

- 36 V_{R2} = retention volume of peak 2;
 37 t_{R2} = retention time of peak 2;
 38 W_h = peak width at half-height;
 39 W_i = peak width at the inflexion point;
 40 h = height of the peak;
 41 $h/2$ = half-height of the peak.

42

Distribution constant (K_0)

44 In size-exclusion chromatography, the elution characteristics of a component in a particular
 45 column may be given by the distribution constant (also referred to as distribution coefficient),
 46 which is calculated using the following equation:

$$K_0 = \frac{t_R - t_0}{t_t - t_0}$$

47

48

- 49 t_R = retention time;
 50 t_0 = retention time of an unretained compound;
 51 t_t = total mobile phase time.

52

Dwell volume (D) (also referred to as V_D):

54 The dwell volume (also known as gradient delay volume) is the volume between the point at
 55 which the eluents meet and the inlet of the column. It can be determined using the following
 56 procedure.

- 57 *Column:* replace the chromatographic column by an appropriate capillary tubing (e.g.
 58 1 m × 0.12 mm).

Mobile phase:

- 60 – *mobile phase A:* water;
 61 – *mobile phase B:* 0.1 per cent V/V solution of acetone in water;

Time (min)	Mobile phase A (per cent V/V)	Mobile phase B (per cent V/V)
0 – 20	100 → 0	0 → 100
20 - 30	0	100

- 62 *Flow rate:* set to obtain sufficient back-pressure (e.g. 2 mL/min).

- 63 *Detection:* spectrophotometer at 265 nm.

- 64 Determine the time ($t_{0.5}$) in minutes when the absorbance has increased by 50 per cent
 65 (Figure 2).

66

$$D = t_D \times F$$

- 67 $t_D = t_{0.5} - 0.5t_G$, in minutes;
 68 t_G = pre-defined gradient time (= 20 min);
 69 F = flow rate, in millilitres per minute.

70

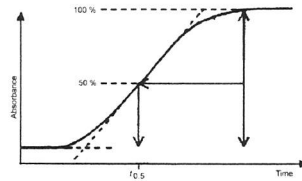


Figure 2

71
72

73 *Note:* where applicable, this measurement is performed with the autosampler in the *inject*
74 position so as to include the injection loop volume in the dwell volume.

75

76 Hold-up time (t_M)

77 Time required for elution of an unretained component (Figure 1, baseline scale being in minutes
78 or seconds).

79 In size-exclusion chromatography, the term retention time of an unretained compound (t_0) is
80 used.

81

82 Hold-up volume (V_M)

83 Volume of the mobile phase required for elution of an unretained component. It may be
84 calculated from the hold-up time and the flow rate (F) in millilitres per minute using the
85 following equation:

86

$$V_M = t_M \times F$$

87 In size-exclusion chromatography, the term retention volume of an unretained compound (V_0)
88 is used.

89

90 Peak

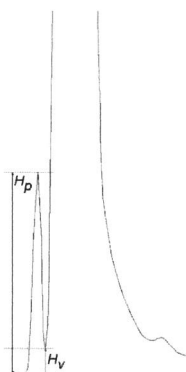
91 Portion of a chromatogram recording the detector response when a single component (or 2 or
92 more unresolved components) is eluted from the column.

93 The peak response may be represented by the peak area or the peak height (h).

94 Peak-to-valley ratio (p/v)

95 The peak-to-valley ratio may be employed as a system suitability criterion when baseline
96 separation between two peaks is not achieved (Figure 3).

97



98

99

Figure 3

$$p/v = \frac{H_p}{H_v}$$

100

101 H_p = height above the extrapolated baseline of the minor peak;
 102 H_v = height above the extrapolated baseline at the lowest point of the curve separating the minor
 103 and major peaks.

104

105 **Plate height (H) (synonym: Height equivalent to one theoretical plate (HETP))**

106 Ratio of the column length (L), in micrometers, to the plate number (N):

107

$$108 \quad H = \frac{L}{N}$$

109

110 **Plate number (N) (synonym: Number of theoretical plates)**

111 A number indicative of column performance (column efficiency). It can only be calculated
 112 from data obtained under either isothermal, isocratic or isodense conditions, depending on the
 113 technique, as the plate number, using the following equation, the values of t_R and w_h being
 114 expressed in the same units:

$$N = 5.54 \left(\frac{t_R}{w_h} \right)^2$$

115

116 t_R = retention time of the peak corresponding to the component;

117 w_h = peak width at half-height ($h/2$).

118

119 The plate number varies with the component as well as with the column, the column
 120 temperature, the mobile phase and the retention time.

121

122 **Reduced plate height (h)**

123 Ratio of the plate height (H), in micrometers, to the particle diameter (d_p) in micrometers:

124

$$125 \quad h = \frac{H}{d_p}$$

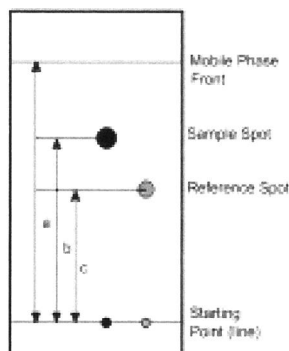
126

127 **Relative retardation (R_{rel})**

128 The relative retardation, used in thin-layer chromatography, is calculated as the ratio of the
 129 distances travelled by the spot of the compound of interest and a reference compound
 130 (Figure 4).

131

$$R_{rel} = b/c$$



132

Figure 4

133 a = migration distance of the mobile phase;

134 b = migration distance of the compound of interest;

135 c = migration distance of the reference compound.

136

137 **Relative retention (r)**

138 Relative retention is calculated as an estimate using the following equation:

139
$$r = \frac{t_{Ri} - t_M}{t_{Rst} - t_M}$$

140 t_{Ri} = retention time of the peak of interest;

141 t_{Rst} = retention time of the reference peak (usually the peak corresponding to the substance to
142 be examined);

143 t_M = hold-up time.

144

145 **Relative retention, unadjusted (r_G) or RRT**

146 Unadjusted relative retention is calculated using the following equation:

147
$$r_G = \frac{t_{Ri}}{t_{Rst}}$$

148 Unless otherwise indicated, values for relative retention stated in monographs correspond to
149 unadjusted relative retention.

150 **Relative retention time (RRT):** see Relative retention, unadjusted.

151 **Resolution (R_s)**

152 The resolution between peaks of 2 components (Figure 1) may be calculated using the
153 following equation:

154
$$R_s = \frac{1.18(t_{R2} - t_{R1})}{w_{h1} + w_{h2}}$$

155 $t_{R2} > t_{R1}$

156 t_{R1}, t_{R2} = retention times of the peaks;

157 w_{h1}, w_{h2} = peak widths at half-height.

158 In quantitative thin-layer chromatography, using densitometry, the migration distances are
159 used instead of retention times and the resolution between peaks of 2 components may be
160 calculated using the following equation:

161
$$R_s = \frac{1.18a(R_{F2} - R_{F1})}{w_{h1} + w_{h2}}$$

162 $R_{F2} > R_{F1}$

163 R_{F1}, R_{F2} = retardation factors of the peaks;

164 w_{h1}, w_{h2} = peak widths at half-height;

165 a = migration distance of the solvent front.

166

167

168 **Retardation factor (R_F)**

169 The retardation factor, used in thin-layer chromatography, is the ratio of the distance from the
170 point of application to the centre of the spot and the distance simultaneously travelled by the
171 solvent front from the point of application (Figure 4).

$$R_F = \frac{b}{a}$$

172

173 b = migration distance of the compound of interest;174 a = migration distance of the solvent front.

175

176 **Retention factor (k)**

177 The retention factor (also known as mass distribution ratio (D_m) or capacity factor (k')) is
178 defined as:

179

$$k = \frac{\text{amount of component in stationary phase}}{\text{amount of component in mobile phase}} = K_C \frac{V_S}{V_M}$$

180

181

182 K_C = distribution constant (also known as equilibrium distribution coefficient);183 V_S = volume of the stationary phase;184 V_M = volume of the mobile phase.

185

186 The retention factor of a component may be determined from the chromatogram using the
187 following equation:

$$k = \frac{t_R - t_M}{t_M}$$

188

189 t_R = retention time;190 t_M = hold-up time.

191

192 **Retention time (t_R)**

193 Time elapsed between the injection of the sample and the appearance of the maximum peak
194 response of the eluted sample zone (Figure 1, baseline scale being in minutes or seconds).

195

196 **Retention volume (V_R)**

197 Volume of the mobile phase required for elution of a compound. It may be calculated from
198 the retention time (t_R) and the flow rate (F) in millilitres per minute using the following
199 equation:

200

201

$$V_R = t_R \times F$$

202 **Retention time of an unretained compound (t_0)**

203 In size-exclusion chromatography, retention time of a component whose molecules are larger
204 than the largest gel pores (Figure 5).

205

206

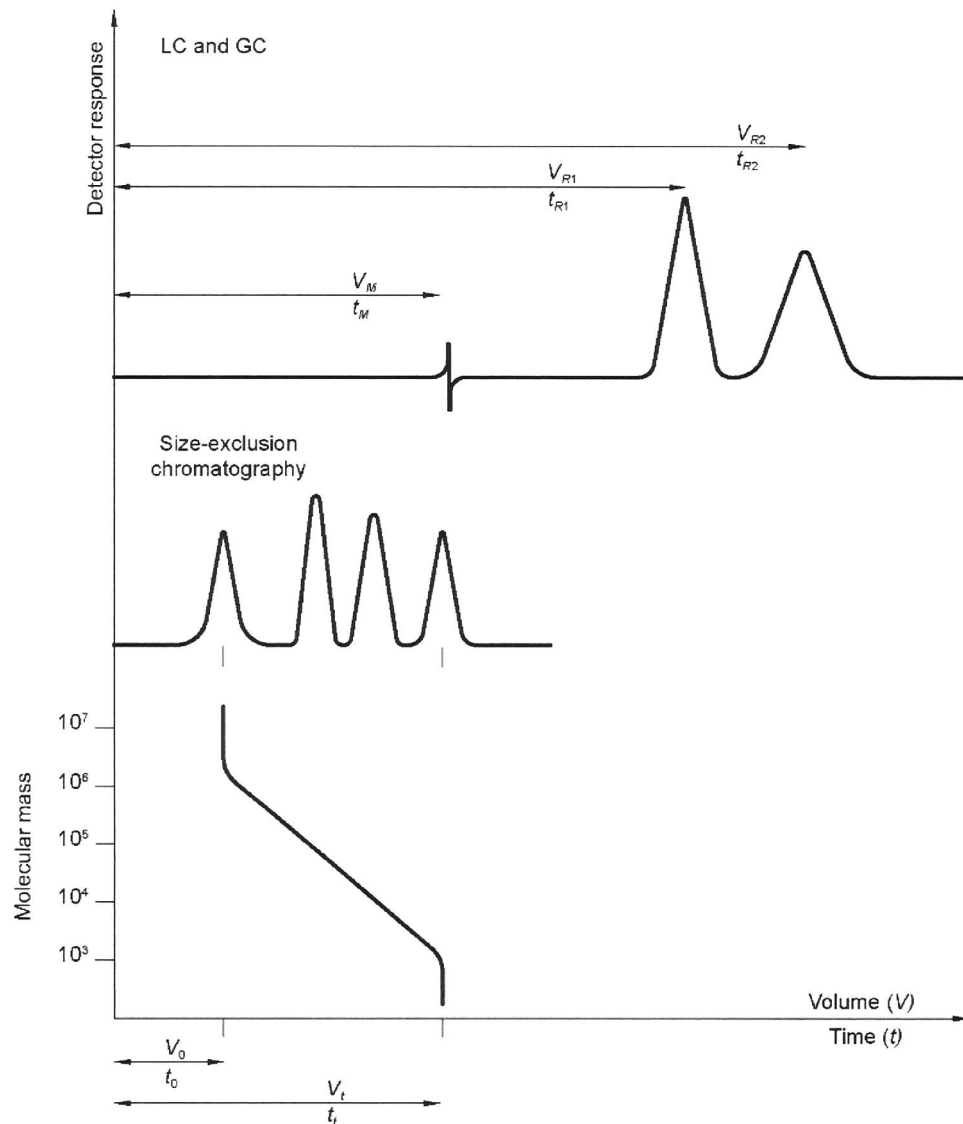
207
208
209

Figure 5

210 **Retention volume of an unretained compound (V_0)**

211 In size-exclusion chromatography, retention volume of a component whose molecules are
 212 larger than the largest gel pores. It may be calculated from the retention time of an unretained
 213 compound (t_0) and the flow rate (F) in millilitres per minute using the following equation:

214

$$V_0 = t_0 \times F$$

215 **Separation factor (α)**

216 Relative retention calculated for two adjacent peaks (by convention, the value of the
 217 separation factor is always > 1):

218

$$\alpha = k_2/k_1$$

219 k_1 = retention factor of the first peak;220 k_2 = retention factor of the second peak.

221

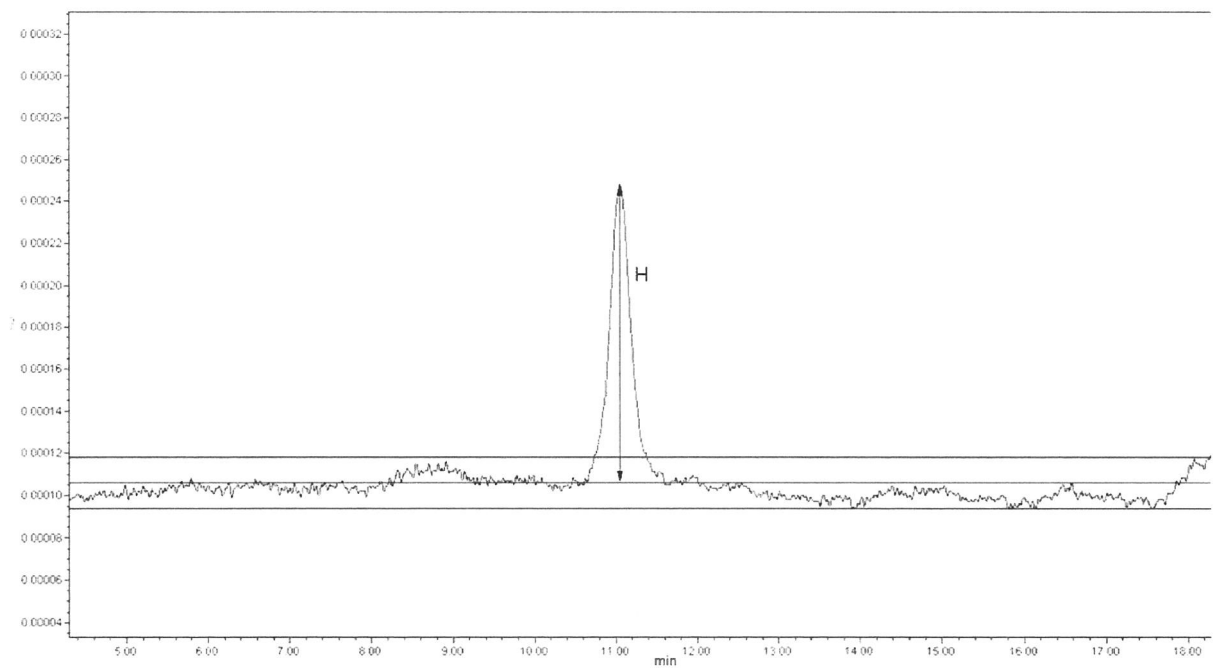
222 **Signal-to-noise ratio (S/N)**

223 The short-term noise influences the precision and accuracy of quantitation. The signal-to-noise
224 ratio is calculated using the following equation:

225
$$S/N = \frac{2H}{h}$$

H = height of the peak (Figure 6) corresponding to the component concerned, in the chromatogram obtained with the prescribed reference solution, measured from the maximum of the peak to the extrapolated baseline of the signal observed over a distance equal to 20 times the width at half-height;

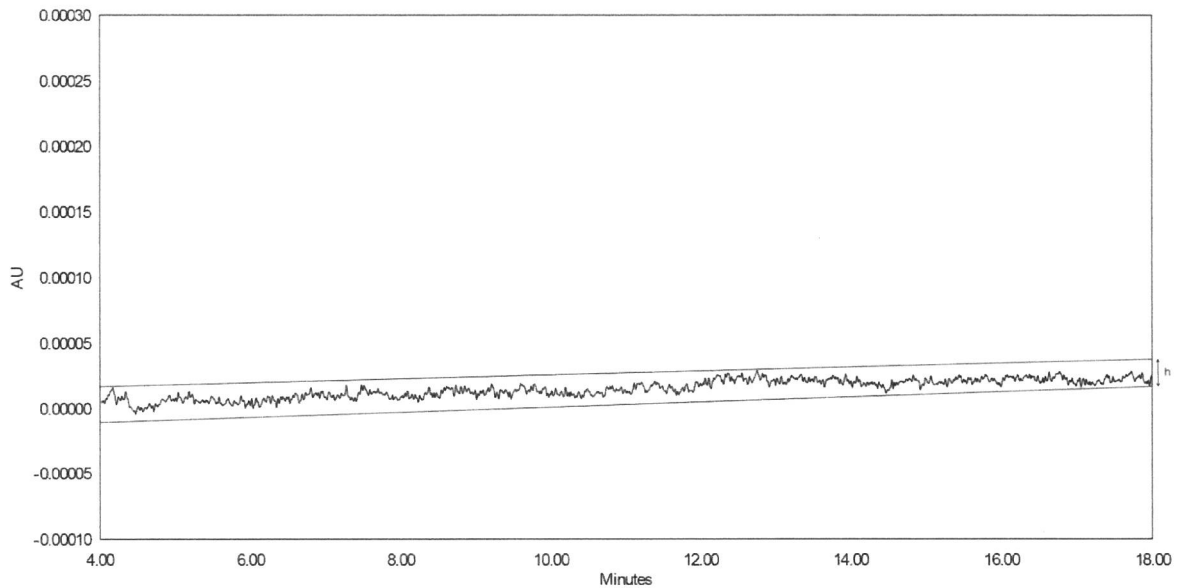
h = range of the noise in a chromatogram obtained after injection of a blank (Figure 7), observed over a distance equal to 20 times the width at half-height of the peak in the chromatogram obtained with the prescribed reference solution and, if possible, situated equally around the place where this peak would be found.



226
227

228

Figure 6. Chromatogram of the reference solution



229

230

231

232

Figure 7. Chromatogram of a blank

233

234

235

236

If a baseline of 20 times the width at half-height is not obtainable because of peaks due to the solvents or reagents, or arising from the mobile phase or the sample matrix, or due to the gas chromatographic temperature programme, a baseline of at least 5 times the width at half-height is permitted.

237

Symmetry factor (A_s)

238

239

The symmetry factor of a peak (also known as the asymmetry factor or tailing factor) (Figure 8) is calculated using the following equation:

240

$$A_s = \frac{w_{0.05}}{2d}$$

241

$w_{0.05}$ = width of the peak at one-twentieth of the peak height;

242

d = distance between the perpendicular dropped from the peak maximum and the leading edge of the peak at one-twentieth of the peak height.

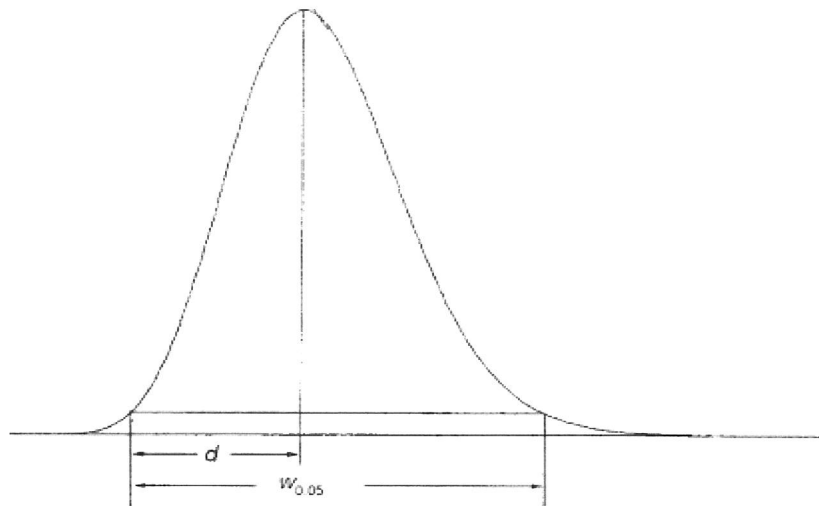
243

244

245

246

An A_s value of 1.0 signifies symmetry. When $A_s > 1.0$, the peak is tailing. When $A_s < 1.0$, the peak is fronting.



247

248

Figure 8

249 **System repeatability**

250 The repeatability of response is expressed as an estimated percentage relative standard deviation
 251 (%RSD) of a consecutive series of measurements for not fewer than 3 injections or applications
 252 of a reference solution, and is calculated using the following equation:

$$253 \quad \%RSD = \frac{100}{\bar{y}} \sqrt{\frac{\sum (y_i - \bar{y})^2}{n - 1}}$$

254

255 y_i = individual values expressed as peak area, peak height, or ratio of areas by the internal
 256 standardisation method;

257 \bar{y} = mean of individual values;

258 n = number of individual values.

259

260 **Total mobile phase time (t_t)**

261 In size-exclusion chromatography, retention time of a component whose molecules are
 262 smaller than the smallest gel pores (Figure 5).

263

264 **Total mobile phase volume (V_t)**

265 In size-exclusion chromatography, retention volume of a component whose molecules are
 266 smaller than the smallest gel pores. It may be calculated from the total mobile phase time and
 267 the flow rate (F) in millilitres per minute using the following equation:

268

$$V_t = t_t \times F$$

269

270 **SYSTEM SUITABILITY**

271 *This section only covers liquid chromatography and gas chromatography.*

272 The various components of the equipment employed must be qualified and be capable of
 273 achieving the performance required to conduct the test or assay.

274 The system suitability tests represent an integral part of the analytical procedure and are used
275 to ensure adequate performance of the chromatographic system. Column plate number,
276 retention factor (mass distribution ratio), system repeatability, signal-to-noise, symmetry factor
277 and resolution/peak-to-valley ratio are the parameters that may be employed in assessing the
278 performance of the chromatographic system. When stated in the individual monograph, in cases
279 of complex chromatographic profiles (e.g., for biotechnological/biological products), visual
280 comparison of the profiles can be used as a system suitability test.

281 Factors that may affect the chromatographic behaviour include:

- 282 – composition and temperature of the mobile phase;
- 283 – ionic strength and pH of the aqueous component of the mobile phase;
- 284 – flow rate, column dimensions, column temperature and pressure;
- 285 – stationary phase characteristics including type of chromatographic support (particle-based
286 or monolithic), particle or pore size, porosity, specific surface area;
- 287 – reversed phase and other surface-modification of the stationary phases, the extent of
288 chemical modification (as expressed by end-capping, carbon loading etc.).

289 Retention times and relative retentions may be provided in monographs for information
290 purposes only, unless otherwise stated in the monograph. There are no acceptance criteria
291 applied to relative retentions.

292 Compliance with the system suitability criteria is required throughout the chromatographic
293 procedure. No sample analysis is acceptable unless the suitability of the system has been
294 demonstrated.

295 The following requirements are to be fulfilled, in addition to any other system suitability
296 criteria stated in the monograph. When specific requirements are stated in the monograph,
297 they supersede the requirements mentioned in this chapter:

298 • ***System repeatability – assay of an active substance or an excipient***

299

300 In an assay of an active substance or an excipient, where the target value is 100 per cent for a
301 pure substance, and a system repeatability requirement is not specified, the maximum
302 permitted relative standard deviation (%RSD_{max}) for the defined limits is calculated for a
303 series (n = 3 to 6) of injections of the reference solution. The maximum permitted relative
304 standard deviation of the peak response does not exceed the appropriate value given in
305 Table 1.

$$306 \quad \%RSD_{max} = \frac{KB\sqrt{n}}{t_{90\%,n-1}}$$

307 $K = \text{constant (0.349)}$, obtained from the expression $K = \frac{0.6}{\sqrt{2}} \times \frac{t_{90\%,6}}{\sqrt{6}}$ in which $\frac{0.6}{\sqrt{2}}$ represents the
308 required percentage relative standard deviation determined on 6 injections for $B = 1.0$;

309 $B = \text{upper limit given in the definition of the individual monograph minus 100 per cent}$;

310 $n = \text{number of replicate injections of the reference solution (3} \leq n \leq 6)$;

311 $t_{90\%,n-1} = \text{Student's } t \text{ at the 90 per cent probability level (double sided) with } n-1 \text{ degrees of}$
312 freedom.

313

Table 1 – Maximum permitted relative standard deviation (assay)

B (per cent)	Number of individual injections <i>n</i>			
	3	4	5	6
	<i>Maximum permitted relative standard deviation (per cent)</i>			
2.0	0.41	0.59	0.73	0.85
2.5	0.52	0.74	0.92	1.06
3.0	0.62	0.89	1.10	1.27

314 B = upper limit of content given in the individual monograph minus 100 per cent.

315

316 • **System sensitivity**

317 The signal-to-noise ratio is used to define the system sensitivity. The limit of quantitation
318 (corresponding to a signal-to-noise ratio of 10) is equal to or less than the reporting threshold.

319

320

321 • **Peak symmetry**

322 Unless otherwise stated, in a test or assay, the symmetry factor (tailing factor) of the peak
323 used for quantitation is 0.8 to 1.8.

324

325 **ADJUSTMENT OF CHROMATOGRAPHIC CONDITIONS**

326 The chromatographic conditions described have been validated during the elaboration of the
327 monograph.

328 The extent to which the various parameters of a chromatographic test may be adjusted without
329 fundamentally modifying the pharmacopoeial analytical procedures are listed below. Changes
330 other than those indicated require revalidation of the procedure.

331

332 Multiple adjustments can have a cumulative effect on the performance of the system and are to
333 be properly evaluated by the users. This is particularly important in cases where the separation
334 pattern is described as a profile. In those cases, a risk assessment has to be carried out.

335

336 Any adjustments must be made on the basis of the pharmacopoeial procedure.

337

338 If adjustments are made to a pharmacopoeial procedure, additional verification tests may be
339 required. To verify the suitability of the adjusted pharmacopoeial procedure, assess the
340 relevant analytical performance characteristics potentially affected by the change.

341

342 When a pharmacopoeial analytical procedure has been adjusted according to the requirements
343 stated below, no further adjustments are allowed without appropriate revalidation.

344 Compliance with the system suitability criteria is required to verify that conditions for
345 satisfactory performance of the test or assay are achieved.

346 Adjustment of conditions with gradient elution (HPLC) or temperature programming (GC) is
347 more critical than with isocratic (HPLC) or isothermal (GC) elution, since it may shift some
348 peaks to a different step of the gradient or to different elution temperatures, potentially causing

349 partial or complete coelution of adjacent peaks or peak inversion, and thus leading to the
350 incorrect assignment of peaks, and to the masking of peaks or a shift such that elution occurs
351 beyond the prescribed elution time.

352 For some parameters, the adjustments are explicitly defined in the monograph to ensure the
353 system suitability.

354

355 **Thin-layer chromatography**

356 *Composition of the mobile phase*: the amount of the minor solvent components may be adjusted
357 by ± 30 per cent relative or ± 2 per cent absolute, whichever is the larger; no other component
358 is altered by more than 10 per cent absolute. A minor component comprises less than or equal
359 to $(100/n)$ per cent, n being the total number of components of the mobile phase. For a minor
360 component at 10 per cent of the mobile phase, a 30 per cent relative adjustment allows a range
361 of 7-13 per cent whereas a 2 per cent absolute adjustment allows a range of 8-12 per cent, the
362 relative value therefore being the larger; for a minor component at 5 per cent of the mobile
363 phase, a 30 per cent relative adjustment allows a range of 3.5-6.5 per cent whereas a 2 per cent
364 absolute adjustment allows a range of 3-7 per cent, the absolute value being the larger in this
365 case.

366 *pH of the aqueous component of the mobile phase*: ± 0.2 pH units, unless otherwise prescribed.

367 *Concentration of salts in the buffer component of a mobile phase*: ± 10 per cent.

368 *Application volume*: 10-20 per cent of the prescribed volume if using fine particle size plates
369 (2-10 μm).

370 **Liquid chromatography: isocratic elution**

371 ***Column parameters and flow rate***

372 \triangleright *Stationary phase*: no change of the identity of the substituent (e.g. no replacement
373 of C18 by C8); the other physico-chemical characteristics of the stationary phase,
374 i.e. chromatographic support, surface modification and extent of chemical
375 modification must be similar; a change from Totally Porous Particle (TPP)
376 columns to Superficially Porous Particle (SPP) columns is allowed provided the
377 above-mentioned requirements are met.

378

379 \triangleright *Column dimensions (particle size, length)*: the particle size and/or length of the
380 column may be modified provided that the ratio of the column length (L) to the
381 particle size (dp) remains constant or in the range between -25 per cent to $+50$
382 per cent of the prescribed L/dp ratio.

383 *Adjustments from totally porous to superficially porous particles*: for the
384 application of particle-size adjustment from totally porous to superficially porous
385 particles, other combinations of L and dp can be used provided that the plate
386 number (N) is within -25 per cent to $+50$ per cent, relative to the prescribed
387 column.

388 These changes are acceptable provided the system suitability criteria are fulfilled,
389 and selectivity and elution order of the specified impurities to be controlled are
390 demonstrated to be equivalent.

391

392 \triangleright *Internal diameter*: in absence of a change in particle size and/or length, the internal
393 diameter of the column may be adjusted.

394 Caution is necessary when the adjustment results in smaller peak volumes, due to a smaller
395 particle size or a smaller internal diameter, a situation which may require adjustments to
396 minimize extra-column band broadening by factors such as instrument connections, detector
397 cell volume and sampling rate, and injection volume.

398

399 When the particle size is changed, the flow rate requires adjustment, because smaller-
400 particle columns will require higher linear velocities for the same performance (as measured
401 by reduced plate height). The flow rate is adjusted for both the change in column diameter
402 and particle size using the following equation:

403

404

$$F_2 = F_1 \times [(dc_2^2 \times dp_1)/(dc_1^2 \times dp_2)]$$

F_1 = flow rate indicated in the monograph, in millilitres per minute;

F_2 = adjusted flow rate, in millilitres per minute;

405 dc_1 = internal diameter of the column indicated in the monograph, in millimetres;

406 dc_2 = internal diameter of the column used, in millimetres;

407 dp_1 = particle size indicated in the monograph, in micrometres;

408 dp_2 = particle size of the column used, in micrometres.

409

410 When a change is made from $\geq 3\text{-}\mu\text{m}$ to $< 3\text{-}\mu\text{m}$ particles in isocratic separations, an
411 additional increase in linear velocity (by adjusting the flow rate) may be justified, provided
412 that the column performance does not drop by more than 20 per cent. Similarly, when a
413 change is made from $< 3\text{-}\mu\text{m}$ to $\geq 3\text{-}\mu\text{m}$ particles, an additional reduction of linear velocity
414 (flow rate) may be justified to avoid reduction in column performance by more than 20 per
415 cent.

416

417 After an adjustment due to a change in column dimensions, an additional change in flow rate
418 of ± 50 per cent is permitted.

419 ➤ *Column temperature*: ± 10 °C, where the operating temperature is specified, unless
420 otherwise prescribed.

421 Further adjustments in analytical procedure conditions (mobile phase, temperature, pH, etc.)
422 may be required, within the permitted ranges described under System Suitability and
423 Adjustment of chromatographic conditions in this chapter.

424 **Mobile phase**

425 ➤ *Composition*: the amount of the minor solvent components may be adjusted by
426 ± 30 per cent relative (see examples under Thin-layer chromatography); no
427 component is altered by more than 10 per cent absolute. A minor component
428 comprises less than or equal to $(100/n)$ per cent, n being the total number of
429 components of the mobile phase;

430 ➤ *pH of the aqueous component of the mobile phase*: ± 0.2 pH units, unless
431 otherwise prescribed;

432 ➤ *Concentration of salts in the buffer component of a mobile phase*: ± 10 per cent;

433 ➤ *Flow rate*: in absence of a change in column dimensions, an adjustment of the flow
434 rate by ± 50 per cent is permitted.

435 **Detector wavelength**: no adjustment permitted.

436 **Injection volume:** when the column dimensions are changed, the following equation may
437 be used for adjusting the injection volume:

$$438 \quad V_{inj2} = V_{inj1} (L_2 d_{c2}^2) / (L_1 d_{c1}^2)$$

439

440 V_{inj1} = injection volume indicated in the monograph, in microlitres;

441 V_{inj2} = adjusted injection volume, in microlitres;

442 L_1 = column length indicated in the monograph, in millimetres;

443 L_2 = new column length, in millimetres;

444 d_{c1} = column internal diameter indicated in the monograph, in millimetres;

445 d_{c2} = new column internal diameter, in millimetres.

446 This equation may not be applicable to changes from TPP columns to SPP columns.

447

448 Even in the absence of any column dimension change, the injection volume may be varied
449 provided System Suitability criteria remain within their established acceptability limits. When
450 the injection volume is decreased, special attention is given to (limit of) detection and
451 repeatability of the peak response(s) to be determined. An increase is permitted provided, in
452 particular, linearity and resolution of the peak(s) to be determined remain satisfactory.

453 **Liquid chromatography: gradient elution**

454 Adjustment of chromatographic conditions for gradient systems requires greater caution than
455 for isocratic systems.

456 **Column parameters and flow rate**

457 ➤ *Stationary phase:* no change of the identity of the substituent (e.g. no replacement of
458 C18 by C8); the other physico-chemical characteristics of the stationary phase, i.e.
459 chromatographic support, surface modification and extent of chemical modification
460 must be similar; a change from Totally Porous Particle (TPP) columns to
461 Superficially Porous Particle (SPP) columns is allowed provided the above-
462 mentioned requirements are met.

463

464 ➤ *Column dimensions (particle size, length):* the particle size and/or length of the
465 column may be modified provided that the ratio of the column length (L) to the
466 particle size (dp) remains constant or in the range between – 25 per cent to +50 per
467 cent of the prescribed L/dp ratio.

468 *Adjustments from totally porous to superficially porous particles:* for the application
469 of particle-size adjustment from totally porous to superficially porous particles,
470 other combinations of L and dp can be used provided that the ratio $(t_R/w_h)^2$ is within
471 – 25 per cent to + 50 per cent, relative to the prescribed column, for each peak used
472 to check the system suitability, as stated in this chapter and the individual
473 monograph.

474 These changes are acceptable provided system suitability criteria are fulfilled, and
475 selectivity and elution order of the specified impurities to be controlled are
476 demonstrated to be equivalent.

477 ➤ *Internal diameter:* in absence of a change in particle size and/or length, the internal
478 diameter of the column may be adjusted.

479 Caution is necessary when the adjustment results in smaller peak volumes, due to a smaller
480 particle size or a smaller internal diameter, a situation which may require adjustments to

481 minimize extra-column band broadening by factors such as instrument connections, detector
482 cell volume and sampling rate, and injection volume.

483

484 When the particle size is changed, the flow rate requires adjustment, because smaller-
485 particle columns will require higher linear velocities for the same performance (as measured
486 by reduced plate height). The flow rate is adjusted for both the change in column diameter
487 and particle size using the following equation:

488

489

$$F_2 = F_1 \times [(dc_2^2 \times dp_1)/(dc_1^2 \times dp_2)]$$

490

491 F_1 = flow rate indicated in the monograph, in millilitres per minute;

492 F_2 = adjusted flow rate, in millilitres per minute;

493 dc_1 = internal diameter of the column indicated in the monograph, in millimetres;

494 dc_2 = internal diameter of the column used, in millimetres;

495 dp_1 = particle size indicated in the monograph, in micrometres;

496 dp_2 = particle size of the column used, in micrometres.

497

498 A change in column dimensions, and thus in column volume, impacts the gradient volume
499 which controls selectivity. Gradients are adjusted to the column volume by changing the
500 gradient volume in proportion to the column volume. This applies to every gradient segment
501 volume. Since the gradient volume is the gradient time, t_G , multiplied by the flow rate, F , the
502 gradient time for each gradient segment needs to be adjusted to maintain a constant ratio of the
503 gradient volume to the column volume (expressed as $L \times dc^2$). Thus, the new gradient time, t_{G2}
504 can be calculated from the original gradient time, t_{G1} , the flow rate(s), and the column
505 dimensions as follows:

506

507

$$t_{G2} = t_{G1} \times (F_1 / F_2) [(L_2 \times dc_2^2) / (L_1 \times dc_1^2)]$$

508

509 Thus, the change in conditions for gradient elution requires three steps:

510 (1) adjust the column length and particle size according to L/dp ,

511 (2) adjust the flow rate for changes in particle size and column diameter, and

512 (3) adjust the gradient time of each segment for changes in column length, diameter and flow
513 rate. The example below illustrates this process.

514

515

Table 2

Variable	Original Conditions	Adjusted Conditions	Comment
Column length (L) in mm	150	100	User's choice
Column diameter (d_c) in mm	4.6	2.1	User's choice
Particle size (d_p) in μm	5	3	User's choice
L/d_p	30.0	33.3	(1)
Flow rate in mL/min	2.0	0.7	(2)
Gradient adjustment factor (t_{G2}/t_{G1})		0.4	(3)
Gradient conditions			
B (per cent)	Time (min)	Time (min)	
30	0	0	
30	3	$(3 \times 0.4) = 1.2$	
70	13	$[1.2 + (10 \times 0.4)] = 5.2$	
30	16	$[5.2 + (3 \times 0.4)] = 6.4$	

516

517 (1) 11 per cent increase within allowed L/d_p change of -25 per cent to $+50$ per cent518 (2) calculated using $F_2 = F_1 [(d_{c2}^2 \times d_{p1}) / (d_{c1}^2 \times d_{p2})]$ 519 (3) calculated using $t_{G2} = t_{G1} \times (F_1 / F_2) [(L_2 \times d_{c2}^2) / (L_1 \times d_{c1}^2)]$

520

521 ➤ *Column temperature*: ± 5 °C, where the operating temperature is specified, unless
522 otherwise prescribed.523 Further adjustments in analytical procedure conditions (mobile phase, temperature, pH, etc.)
524 may be required, within the permitted ranges described under System Suitability and
525 Adjustment of Chromatographic Conditions in this chapter.526 **Mobile phase**527 ➤ *Composition/gradient*: adjustments of the composition of the mobile phase and the
528 gradient are acceptable provided that:

529 – the system suitability criteria are fulfilled;

530 – the principal peak(s) elute(s) within ± 15 per cent of the retention time(s) obtained
531 with the original conditions; this requirement does not apply when the column
532 dimensions are changed;533 – the composition of the mobile phase and the gradient are such that the first peaks
534 are sufficiently retained and the last peaks are eluted.535 ➤ *pH of the aqueous component of the mobile phase*: ± 0.2 pH units, unless otherwise
536 prescribed.537 ➤ *Concentration of salts in the buffer component of a mobile phase*: ± 10 per cent.538 Where compliance with the system suitability criteria cannot be achieved, it is often
539 preferable to consider the dwell volume or to change the column.540 **Dwell volume.** The configuration of the equipment employed may significantly alter the
541 resolution, retention time and relative retentions described. Should this occur, it may be due to
542 a change in dwell volume. Monographs preferably include an isocratic step before the start of

543 the gradient programme so that an adaptation can be made to the gradient time points to take
544 account of differences in dwell volume between the system used for analytical procedure
545 development and that actually used. It is the user's responsibility to adapt the length of the
546 isocratic step to the analytical equipment used. If the dwell volume used during the
547 elaboration of the monograph is given in the monograph, the time points (t min) stated in the
548 gradient table may be replaced by adapted time points (t_c min), calculated using the following
549 equation:

$$t_c = t - \frac{(D - D_0)}{F}$$

550
551

552 D = dwell volume, in millilitres;

553 D_0 = dwell volume used for development of the analytical procedure, in millilitres;

554 F = flow rate, in millilitres per minute.

555 The isocratic step introduced for this purpose may be omitted if validation data for application
556 of the analytical procedure without this step is available.

557 **Detector wavelength:** no adjustment permitted.

558 **Injection volume:** when the column dimensions are changed, the following equation may
559 be used for adjusting the injection volume:

$$V_{inj2} = V_{inj1} (L_2 d_{c2}^2) / (L_1 d_{c1}^2)$$

560

561
562 V_{inj1} = injection volume indicated in the monograph, in microlitres;

563 V_{inj2} = adjusted injection volume, in microliters;

564 L_1 = column length indicated in the monograph, in millimetres;

565 L_2 = new column length, in millimetres;

566 d_{c1} = column internal diameter indicated in the monograph, in millimetres;

567 d_{c2} = new column internal diameter, in millimetres.

568 This equation may not be applicable to changes from TPP columns to SPP columns.

569 Even in the absence of any column dimension change, the injection volume may be varied
570 provided system suitability criteria remain within their established acceptability limits. When
571 the injection volume is decreased, special attention is given to (limit of) detection and
572 repeatability of the peak response(s) to be determined. An increase is permitted provided, in
573 particular, linearity and resolution of the peak(s) to be determined remain satisfactory
574

575 Gas chromatography

576 Column parameters

577 ➤ *Stationary phase:*

578 – *particle size:* maximum reduction of 50 per cent; no increase permitted (packed
579 columns);

580 – *film thickness:* – 50 per cent to + 100 per cent (capillary columns);
581

582 ➤ *Column dimensions:*

583 – *length:* – 70 per cent to + 100 per cent;

584 – *internal diameter:* ± 50 per cent;

585

586

➤ *Column temperature*: ± 10 per cent;

587

➤ *Temperature programme*: adjustment of temperatures is permitted as stated above; adjustment of ramp rates and hold times of up to ± 20 per cent is permitted.

588

589

Flow rate: ± 50 per cent.

590

The above changes are acceptable provided system suitability criteria are fulfilled, and selectivity and elution order of the specified impurities to be controlled are demonstrated to be equivalent.

591

592

593

Injection volume and split ratio: may be varied provided system suitability criteria remain within their established acceptability limits. When the injection volume is decreased, or the split ratio is increased, special attention is given to (limit of) detection and repeatability of the peak response(s) to be determined. An increase in injection volume or a decrease in split ratio is permitted provided, in particular, linearity and resolution of the peak(s) to be determined remain satisfactory.

594

595

596

597

598

599

Injection port temperature and transfer-line temperature in static head-space conditions: ± 10 °C, provided no decomposition or condensation occurs.

600

601

602

603

QUANTITATION

604

605

The following quantitation approaches may be used in general texts or monographs:

606

607

— *External standard method*.

608

- using a calibration function

609

Standard solutions with several graded amounts of a reference standard of the compound to be analysed are prepared in a range that has been demonstrated to give a linear response, and a fixed volume of these standard solutions is injected. With the chromatograms obtained, a calibration function is prepared by plotting the peak areas or peak heights on the ordinate against the amount of reference standard on the abscissa. The calibration function is generally obtained by linear regression. Then, a sample solution is prepared according to the procedure specified in the individual monograph. The chromatography is performed under the same operating conditions as for the preparation of the calibration function, the peak area or peak height of the compound to be analysed is measured, and the amount of the compound is read out or calculated from the calibration function.

610

611

612

613

614

615

616

617

618

619

- using one-point calibration

620

In an individual monograph, generally one of the standard solutions with a concentration within the linear range of the calibration function and a sample solution with a concentration close to that of the standard solution are prepared, and the chromatography is performed under fixed conditions to obtain the amount of the compound by comparing the responses obtained. In this method, all procedures, such as the injection, must be carried out under constant conditions.

621

622

623

624

625

626

— *Internal standard method*.

627

- using a calibration function

628

In the internal standard method, a stable compound is chosen as an internal standard which shows a retention time close to that of the compound to be analysed, and whose peak is well

629

630 separated from all other peaks in the chromatogram. Several standard solutions containing a
631 fixed amount of the internal standard and graded amounts of a reference standard of the
632 compound to be analysed are prepared. Based on the chromatograms obtained by injection of
633 a fixed volume of individual standard solutions, the ratio of peak area or peak height of the
634 reference standard to that of the internal standard is calculated. A calibration function by
635 plotting these ratios on the ordinate against the amount of the reference standard or the ratio
636 of the amount of reference standard to that of the internal standard on the abscissa is prepared.
637 The calibration function is generally obtained by linear regression. Then, a sample solution
638 containing the internal standard in the same amount as in the standard solutions used for the
639 preparation of the calibration function is prepared according to the procedure specified in the
640 individual monograph. The chromatography is performed under the same operating conditions
641 as for the preparation of the calibration function. The ratio of the peak area or peak height of
642 the compound to be analysed to that of the internal standard is calculated, and the amount of
643 the compound is read out or calculated from the calibration function.
644

645 • using one point calibration

646 In an individual monograph, generally one of the standard solutions with a concentration
647 within the linear range of the calibration function and a sample solution with a concentration
648 close to that of the standard solution, both containing a fixed amount of the internal standard,
649 are prepared, and the chromatography is performed under fixed conditions to determine the
650 amount of the compound to be analysed by comparing the ratios obtained.

651 — *Normalisation procedure*. Provided linearity of the peaks has been demonstrated,
652 individual monographs may prescribe that the percentage content of a component of the
653 substance to be examined is calculated by determining the area of the corresponding peak as a
654 percentage of the total area of all the peaks, excluding those due to solvents or reagents or
655 arising from the mobile phase or the sample matrix, and those at or below the disregard limit
656 or reporting threshold.
657

658 OTHER CONSIDERATIONS

659 **Detector response**

660 The detector sensitivity is the signal output per unit concentration or unit mass of a substance
661 in the mobile phase entering the detector. The relative detector response factor, commonly
662 referred to as *response factor*, expresses the sensitivity of a detector for a given substance
663 relative to a standard substance. The *correction factor* is the reciprocal of the response factor.
664 In tests for related substances any correction factors indicated in the monograph are applied
665 (i.e. when the *response factor* is outside the range 0.8-1.2).

666 **Interfering peaks**

667 Peaks due to solvents and reagents or arising from the mobile phase or the sample matrix are
668 disregarded.
669

670 **Measurement of peaks**

671 Integration of the peak area of any impurity that is not completely separated from the
672 principal peak is preferably performed by tangential skim (Figure 9).

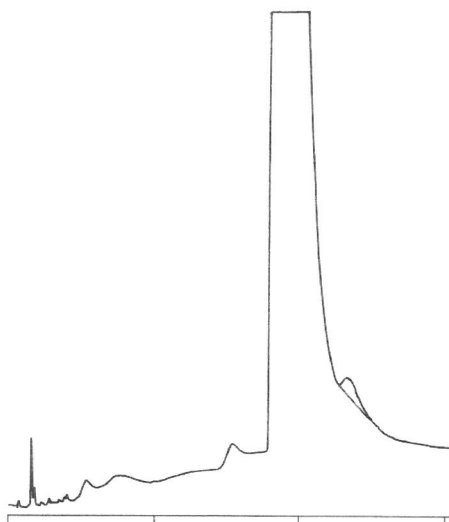


Figure 9

673
674
675
676
677

Reporting threshold.

678 When the related substances test prescribes a limit for the total of impurities or a quantitative
679 determination of an impurity, it is important to choose an appropriate *reporting threshold* and
680 appropriate conditions for the integration of the peak areas.

681 In such tests the reporting threshold, i.e. the limit above which a peak is reported, is
682 generally 0.05 per cent.